



Spare Parts For  
Concrete Pumps & Truck Mixers



Yudin Equipment aims at customer satisfaction and high-quality standards in the sectors it serves while upholding a modern corporate culture that is open to innovation and global service understanding. Our company is an established name on both domestic and international markets. We strive every day to become a leading supplier of spare parts for concrete related machinery by preserving its core values of trust, quality and competitiveness.

We can summarize our mission with the slogan **On-time delivery and accurate manufacturing of all our products!**

### **About Us**

Since the day we were founded, we have grown rapidly to take our rightful place in the sector with our professional and experienced staff, sectoral experience, quality products, timely deliveries and exceptional after sales service.

We provide standard and custom production in our Ankara/Turkey based plant where we do high quality metal processing and mold production through our CNC machines, lathes and vertical milling machines. Whereas our plastic injection equipment, silicon and rubber presses indulge in serial production of rubber, plastic & silicone parts.

### **Our Vision**

To strengthen our R&D and machinery park by valuing technology and innovation as we increase our product portfolio and expand our business. To be respectful towards moral values by understanding our responsibility towards our customers and the environment at home as well as abroad. To be a company preferred by the companies we serve and respected by our competitors by prioritizing the demands and requests of our customers.

### **Our Values**

Client satisfaction is our utmost priority  
Educated & professional personnel  
Team spirit  
Quality and guaranteed production  
Timely product delivery  
After-sales service  
Constantly evolving and improving

---

# Spare Parts For Concrete Pumps & Truck Mixers



# PUTZMEISTER

THE ORIGINAL MANUFACTURER'S NAMES, MANUFACTURER LOGOS, PART NAMES AND PART DESCRIPTIONS ARE USED FOR REFERENCE PURPOSES ONLY. IT IS NOT IMPLIED, THAT ANY PARTS IN THIS CATALOGUE ARE THAT OF THE ORIGINAL MANUFACTURERS.



SK1001



S VALVE 2018N

SK1002



WEAR SLEEVE

SK1003



S VALVE SHAFT Ø80

SK1004



WEAR RING DN 200 DURO22

SK1005



SHAFT FOR S VALVE Ø80



SK1006



S VALVE Ø90

SK1007



WEAR SLEEVE

SK1008



S VALVE SHAFT Ø90

SK1009



WEAR PLATE HOUSING

SK1010



SHAFT FOR S VALVE Ø80



**SK1011**



WEAR RING WITH WELDING  
DN230/260

**SK1012**



THRUST RING WITH STEEL

**SK1013**



WEAR RING DN230

**SK1014**



THRUST RING WITHOUT STEEL





SK1015



SLEWING LEVER Ø80

SK1016



SLEWING LEVER Ø90

SK1017



SECURING PLATE DN 200

SK1018



HEXAGONAL NUT

SK1019



BALL CUP Ø60

SK1020



WASHER



**ISK1021**



OUTLER HOSTING

**ISK1022**



COMPLETE OUTLER HOSTING

**ISK1023**



SEAL SET FOR OUTER HOUSING

**ISK1024**



DISCHARGE SUPPORT

**ISK1025**



BALL CUP RING

**ISK1026**



SCRAPER RING





ISK1027



OUTER HOUSING NEW TYPE

ISK1028



COMPLETE OUTER HOUSING NEW TYPE

ISK1029



SEAL SET FOR OUTER HOUSING NEW TYPE

ISK1030



O RING

ISK1031



GUIDE BAND

ISK1032



NUTRING



**ISK1033**



COMPLETE UPPER HOUSING Ø80

**ISK1034**



SUPPORT FLANGE Ø80

**ISK1035**



WEAR SLEEVE Ø80

**ISK1036**



DISC

**ISK1037**



BUSH

**ISK1038**



SEAL SET FOR Ø80 UPPER HOUSING



ISK1039



COMPLETE UPPER HOUSING Ø90

ISK1040



SUPPORT FLANGE Ø90

ISK1041



DISC

ISK1042



SEAL SET FOR Ø90 UPPER HOUSING

ISK1043



WEAR SLEEVE Ø90

ISK1044



BUSH



**ISK1045**



PLUNGER CYLINDER Ø60 x 160

**ISK1046**



PLUNGER TUBE Ø60

**ISK1047**



PLUNGER CYLINDER Ø60 x 160 ONE HOLE

**ISK1048**



SECURING PLATE

**ISK1049**



SEAL SET Ø60

**ISK1050**



PISTON ROD Ø60



ISK1051



PLUNGER CYLINDER Ø80 x 160

ISK1052



PLUNGER TUBE Ø80

ISK1053



PLUNGER CYLINDER Ø80 x 200

ISK1054



PLUNGER TUBE Ø80 x 200

ISK1055



SEAL SET Ø80

ISK1056



PISTON ROD Ø80



**ISK1057**



PLUNGER CYLINDER Ø60 x 160

**ISK1058**



PLUNGER TUBE Ø60

**ISK1059**



PLUNGER CYLINDER Ø60 x 160 ONE HOLE

**ISK1060**



PISTON ROD Ø60

**ISK1061**



SEAL SET Ø60

**ISK1062**



SECURING PLATE





ISK1063



PLUNGER CYLINDER Ø80 x 160

ISK1064



PLUNGER TUBE Ø80 x 160

ISK1065



COVER

ISK1066



SEAL SET Ø80

ISK1067



CONNECTION BLOCK

ISK1068



PISTON ROD Ø80 x 200



ISK1069



ERGONIC HOPPER RS909



ISK1069-1



ERGONIC HOPPER RS909 COMPLETE



ISK1070



VIBRATOR

ISK1071



GRILL

ISK1072



GRILL NEW TYPE

ISK1073



HOPPER COVER

ISK1074



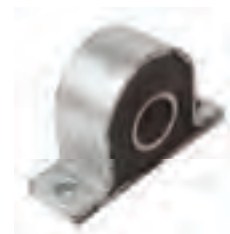
SLIDE

ISK1075



RUBBER FOR HOPPER 25 MT

ISK1076



RUBBER BUFFER



ISK1077



CLAMPING PIECE RIGHT

ISK1078



CLAMPING PIECE LEFT

ISK1079



RUBBER BUFFER 50 x 30

ISK1080



RUBBER BUFFER

ISK1081



SEAL FOR SLIDE

ISK1082



MOUNTING BOLT

ISK1083



WEDGE

ISK1084



COMPLETE SET



**ISK1085**



COMPLETE BEARING FLANGE Ø60

**ISK1086**



BEARING FLANGE Ø60

**ISK1087**



RUBBER DISC Ø60

**ISK1088**



FITTING FOR BEARING FLANGE

**ISK1089**



BUSH

**ISK1090**



O RING





ISK1091



COMPLATE BEARING FLANGE Ø50

ISK1092



BEARING FLANGE Ø50

ISK1093



O RING

ISK1094



RUBBER DISC Ø50

ISK1095



BUSH Ø50

ISK1096



WASHER



**ISK1097**



COMPLETE BEARING FLANGE Ø40

**ISK1098**



BEARING FLANGE Ø40

**ISK1099**



BUSH Ø40

**ISK1100**



RUBBER DISC Ø40

**ISK1101**



O RING

**ISK1102**



FITTING FOR BEARING FLANGE

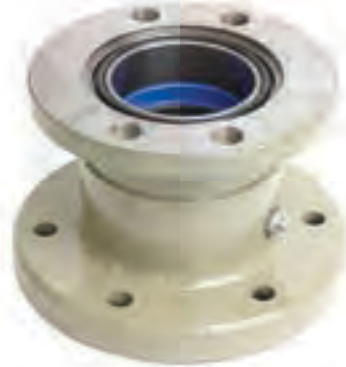


ISK1103



COMPLATE BEARING FLANGE

ISK1104



BEARING FLANGE

ISK1105



BUSH

ISK1106



O RING

ISK1107



SEAL

ISK1108



RUBBER DISC



ISK1109



COMPLETE BEARING FLANGE CLOSED

ISK1110



BEARING FLANGE CLOSED

ISK1111



FLANGE

ISK1112



TORQUE SUPPORT

ISK1113



RUBBER DISC Ø40

ISK1114



FITTINGS FOR BEARING FLANGE



ISK1115



HYDRAULIC PUMP

ISK1116



SEAL SET FOR OEM HYDRAULIC MOTOR OMH 500

ISK1117



SHAFT FOR OEM HYDRAULIC MOTOR OMH 500

ISK1118



HYDRAULIC PUMP

ISK1119



SHAFT FOR HYDRAULIC MOTOR

ISK1120



CONTROL BLOCK



**ISK1121**



MIXER SHAFT MIDDLE 88 cm

**ISK1122**



MIXER SHAFT MIDDLE 95 cm

**ISK1123**



MIXER SHAFT Ø60 x 250

**ISK1124**



MIXER SHAFT Ø60 x 285

**ISK1125**



MIXER SHAFT Ø45

**ISK1126**



MIXER SHAFT Ø60 x 345





ISK1127



MIXER SHAFT Ø50 x 250

ISK1128



MIXER SHAFT Ø50 x 285

ISK1129



MIXING PADDLE LEFT

ISK1130



MIXING PADDLE RIGHT

ISK1131



CONVEYING FROM RIGHT

ISK1132



CONVEYING FROM LEFT

ISK1133



MIXING PADDLE LEFT HARD WELDED

ISK1134



MIXING PADDLE RIGHT HARD WELDED



**ISK1135**



HYDRAULIC CYLINDER

**ISK1136**



PISTON ROD

**ISK1137**



CYLINDER BARREL

**ISK1138**



JOINT HEAD JOINT HEAD COMPLETE

**ISK1139**



LID

**ISK1140**



RADIAL PIVOT BEARING

**ISK1141**



CYLINDER SEAL SET

**ISK1142**



GUIDE BUSH



ISK1143



HOPPER

ISK1144



INTERMEDIATE RING

ISK1145



INTERMEDIATE RING NEW TYPE

ISK1146



INTERMEDIATE RING

ISK1147



INTERMEDIATE RING



**ISK1148**



SPECTACLE WEAR PLATE

**ISK1149**



SPECTACLE WEAR PLATE

**ISK1150**



SPECTACLE WEAR PLATE

**ISK1151**



SPECTACLE WEAR PLATE

**ISK1152**



SPECTACLE WEAR PLATE

**ISK1153**



SPECTACLE WEAR PLATE

**ISK1154**



SPECTACLE WEAR PLATE PUMI



ISK1155



WEAR RING

ISK1156



THRUST RING Ø200

ISK1157



WEAR RING Ø230

ISK1158



THRUST RING Ø230

ISK1159



WEAR RING ERGONIC Ø230

ISK1160



THRUST RING Ø230

ISK1161



WEAR RING

ISK1162



O RING



ISK1163



WEAR RING Ø200

ISK1164



THRUST RING Ø200

ISK1165



WEAR RING

ISK1166



O RING

ISK1167



PRESSURE PLATE

ISK1168



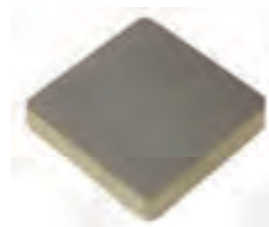
WEAR PLATE

ISK1169



WEAR PLATE

ISK1170



WEAR STRIP





ISK1171



PISTON RAM Ø230

ISK1172



PISTON RAM Ø230-NBR MULTI

ISK1173



PISTON RAM DN180

ISK1174



PISTON RAM DN200

ISK1175



SPACER FLANGE

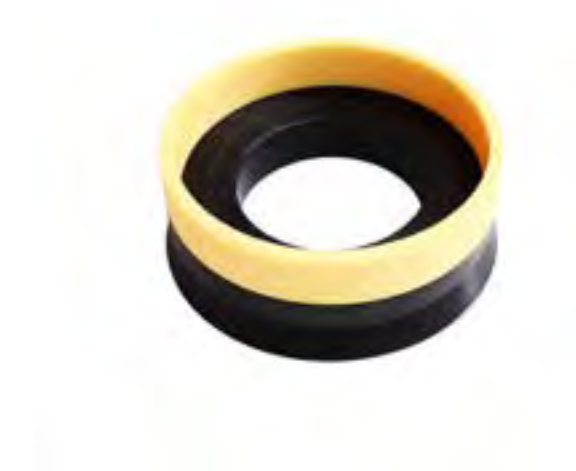
ISK1176



SPACER FLANGE



## ISK1177



SEAL FOR PISTON RAM DN 180  
SEAL FOR PISTON RAM DN 200  
SEAL FOR PISTON RAM DN 230  
SEAL FOR PISTON RAM DN 250  
SEAL FOR PISTON RAM DN 280

## ISK1178



SEAL FOR PISTON RAM DN 180  
SEAL FOR PISTON RAM DN 200  
SEAL FOR PISTON RAM DN 230  
SEAL FOR PISTON RAM DN 250  
SEAL FOR PISTON RAM DN 280

## ISK1179



SEAL FOR PISTON RAM DN 180  
SEAL FOR PISTON RAM DN 200  
SEAL FOR PISTON RAM DN 230  
SEAL FOR PISTON RAM DN 250  
SEAL FOR PISTON RAM DN 280



**ISK1180**



PUMPING CYLINDER 200 x 2100

**ISK1181**



PUMPING CYLINDER 250 x 2310

**ISK1182**



PUMPING CYLINDER 280 x 2355



**ISK1183**



FOOT BEARING

**ISK1184**



BUSH 350x355x077 DU-B NUT

**ISK1185**



BUSH 275x280x077 DU NUT

**ISK1186**



BUSH 290x295x060 DU NUT

**ISK1187**



BUSH 288x293x45 DU NUT

**ISK1188**



HALF RING

**ISK1189**



BUSH 288x293x45

**ISK1190**



BUSH 288x293x45



ISK1191



HYDRAULIC CYLINDER 130 x 80 2100

ISK1192



CYLINDER BARREL

ISK1193



CYLINDER ROD Q4 5 MM L-1178MM

ISK1194



GUIDE BUSHING

ISK1195



HEAD FLANGE



**ISK1196**



GUIDE BUSHING

**ISK1197**



HEAD FLANGE

**ISK1198**



COMPLETE PISTON Ø80

**ISK1199**



PISTON Ø80

**ISK1200**



PISTON RING THICK Ø110 / 63

**ISK1201**



PISTON RING THIN Ø110 / 63

**ISK1202**



SEAL SET Ø80

**ISK1203**



COMPLETE SEAL SET Ø63





ISK1204



GEAR BOX G64

ISK1205



SPLINED SHAFT G64

ISK1206



CLUTCH SHAFT

ISK1207



SPLINED SHAFT G61

ISK1208



DRIVING PINION G61



ISK1209



SWITCH FORK G61

ISK1210



SWITCH FORK G64

ISK1211



PISTON

ISK1212



PISTON

ISK1213



SWITCHING CYLINDER

ISK1214



COUPLING

ISK1215



INPUT SHAFT G64

ISK1216



COUPLING PLECE



ISK1217



HOPPER COMPLETE FOR Ø80 S VALVE

ISK1218



CLAMP COUPLING 6"

ISK1219



WEDGE

ISK1220



CLAMP COUPLING 5.5" NEW TYPE

ISK1221



RUBBER FOR HOPPER



ISK1222



REDUCTION ELBOW

ISK1223



6" ELBOW ZXM/ZXV

ISK1224



ELBOW 90 DEGREE 5"

ISK1225



O RING

ISK1226



CLAMP COUPLING 6"



**ISK1227**



ELBOW 10 DEGREE 5.5"

**ISK1228**



ELBOW 15 DEGREE 5.5"

**ISK1229**



ELBOW 20 DEG. LONG

**ISK1230**



ELBOW 30 DEGREE 5.5"

**ISK1231**



ELBOW 45 DEGREE SHORT TYPE

**ISK1232**



ELBOW 45 DEG. LONG

**ISK1233**



ELBOW 90 DEGREE 5.5"

**ISK1234**



ELBOW 90 DEGREE SHORT TYPE



ISK1235



S PIPE

ISK1236



ELBOW 90 DEGREE R=1000

ISK1237



ELBOW 90 DEGREE SHORT TYPE

ISK1238



ELBOW 45 DEGREE LONG





**ISK1239**



REDUCER 200 mm

**ISK1240**



REDUCTION 100 mm

**ISK1241**



ELBOW 20 DEG. LONG

**ISK1242**



REDUCER PIPE 2163 mm

**ISK1243**



REDUCER PIPE 1200 mm

**ISK1244**



REDUCER PIPE 1200 mm



ISK1245



5,5" DELIVERY TUBE 3000 mm

ISK1246



SPORT PLATE

ISK1247



STAIRS LEFT



**ISK1248**



4,5" FLANGE

**ISK1249**



5,5" FLANGE

**ISK1250**



5,5" FLANGE HEAD TYPE



ISK1251



SEAL: 2,5", 3", 3,5", 4", 4,5", 5", 5,5", 6", 8", 10"

ISK1252



"V" LIP SEAL: 4,5", 5,5"

ISK1253



LIP SEAL: 5,5"

ISK1254



CLEANING BALLS 4"  
CLEANING BALLS 5"  
CLEANING BALLS 6"



ISK1255



CLAMP COUPLING 5.5"

ISK1256



MOUNTING COUPLING 5.5"

ISK1257



SCREW COUPLING SK 5.5"

ISK1258



SCREW MOUNTING COUPLING 5.5"

ISK1259



SCREW COUPLING 6"

ISK1260



MOUNTING COUPLING 6"

ISK1261



RELAY 24VDC

ISK1262



TIGHTENING STRAP



ISK1263



CLAMP COUPLING 6"

ISK1264



CLAMP COUPLING 6"

ISK1265



CLAMP COUPLING

ISK1266



U CLAMP

ISK1267



WEDGE

ISK1268



WEDGE

ISK1269



MOUNTING COUPLING

ISK1270



DOUBLE BOOM CLAMP





**ISK1271**



ACCUMULATOR 4 LT

**ISK1272**



BLADDER 4 LT

**ISK1273**



ACCUMULATOR 6 LT

**ISK1274**



BLADDER 6 LT

**ISK1275**



ACCUMULATOR 10 LT

**ISK1276**



ACCUMULATOR 10 LT

**ISK1277**



HOSE CLIP

**ISK1278**



TEMPERATURE TRANSMITTER



**ISK1279**



TEMPERATURE TRANSMITTER

**ISK1280**



TEMPERATURE TRANSMITTER

**ISK1281**



OIL RADIATOR

**ISK1282**



OIL COOLER COMPLETE

**ISK1283**



FAN 12"

**ISK1284**



FAN 11"

**ISK1285**



ELECTRICAL GREASE PUMP 3,3 LT

**ISK1286**



FAN 10"



ISK1287



FILTER

ISK1288



FILTER

ISK1289



FILTER

ISK1290



FILTER

ISK1291



FILTER

ISK1292



FILTER

ISK1293



FILTER

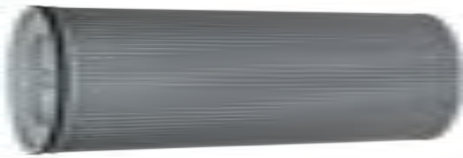
ISK1294



FILTER



**ISK1295**



FILTER

**ISK1296**



FLUSHING WATER PUMP WITH MOTOR

**ISK1297**



FILTER

**ISK1298**



FLUSHING WATER PUMP WITHOUT MOTOR

**ISK1299**



FILTER

**ISK1300**



HYDRAULIC PUMP



ISK1301



HYDRAULIC PUMP

ISK1302



HYDRAULIC PUMP A2FO16

ISK1303



HYDRAULIC PUMP L A7V28(24)DR

ISK1304



HYDRAULIC PUMP

ISK1305



HYDRAULIC PUMP R 14 CM

ISK1306



HYDRAULIC PUMP A4VO

ISK1307



HYDRAULIC PUMP

ISK1308



HYDRAULIC PUMP A4VG145



**ISK1309**



BOOM CONTROL BLOCK HHVP6-24V

**ISK1310**



MIXING VALVE

**ISK1311**



XXX

**ISK1312**



CONTROL PRESS REGULATOR-MONOBLOCK

**ISK1313**



DIRECT CONTROL BLOCK LEFT 4+V

**ISK1314**



FLUSHING VALVE

**ISK1315**



HYDRAULIC CONTROL 24V;FFH

**ISK1316**



HYDRA MOTOR A2F16





ISK1317



HYDRAULIC PUMP R A4VG125EP

ISK1318



MAIN PUMP A4VG125

ISK1319



HYDRAULIC PUMP R A4VG180EP

ISK1320



LUBRICANT DISTRUBUTOR

ISK1321



OPERATING HOURS METER 12/24V

ISK1322



PREASSURE GAUGE 400 BAR

ISK1323



PRESSURE GAUGE 400 BAR

ISK1324



PRESSURE GAUGE 60 BAR





**ISK1325**



CARRYING BELT

**ISK1326**



SOLENOID 24 Vs

**ISK1327**



BATTERY

**ISK1328**



BATTERY 4,2

**ISK1329**



BATTERY

**ISK1330**



BATTERY 2100 AMPER

**ISK1331**



SOLENOID COIL 24 V

**ISK1332**



BATTERY CHARGER



ISK1333



RADIO REMOTE CONTROL PROP

ISK1334



RADIO REMOTE CONTROL PROP

ISK1335



FILTER CARTRIDGE

ISK1336



WATER PROTECTION CAP.

ISK1337



HOUSING PART

ISK1338



HOUSING PART

ISK1339



REMOTE CONTROL CABLE 40 MT (32 POLES)

ISK1340



BELLOWS



ISK1341



SWITCH BOX

ISK1342



FLIP SWITCH

ISK1343



FLIP SWITCH

ISK1344



TOGGLE SWITCH 12A8V 4WECHS

ISK1345



HW BOOM VALVE

ISK1346



SWITCH

ISK1347



MAGNETIC SWITCH M12X1

ISK1348



LIMIT SWITCH

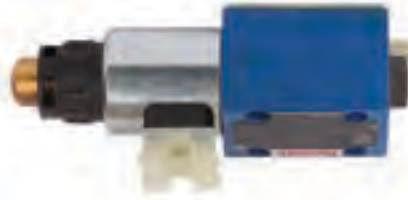


ISK1349



4/3 WAY VALVE

ISK1350



4/2 WAY VALVE

ISK1351



4/2 WAY VALVE

ISK1352



4/2 WAY VALVE

ISK1353



HYDRAULIC CHECK VALVE

ISK1354



PRESSURE GAUGE 60 BAR

ISK1355



PRESSURE GAUGE 400 BAR

ISK1356



4/3 WAY VALVE



ISK1357



CONNECTION BOLT

ISK1358



BALL COCK

ISK1359



MECHANICAL SHUT OFF VALVE

ISK1360



ENERGY GUIDING CHAIN

# Spare Parts For Concrete Pumps & Truck Mixers



# SCHWING

THE ORIGINAL MANUFACTURER'S NAMES, MANUFACTURER LOGOS, PART NAMES AND PART DESCRIPTIONS ARE USED FOR REFERENCE PURPOSES ONLY. IT IS NOT IMPLIED, THAT ANY PARTS IN THIS CATALOGUE ARE THAT OF THE ORIGINAL MANUFACTURERS.





**ISK2001**



ROCK VALVE

**ISK2002**



ROCK VALVE

**ISK2003**



SLEWING SHAFT

**ISK2004**



SLEWING SHAFT

**ISK2005**



BACK UP RING DN 220

**ISK2006**



BACK UP RING DN 210





**ISK2007**



BASE PLATE

**ISK2008**



BASE PLATE

**ISK2009**



WEARING INSERT DN 250

**ISK2010**



WEARING INSERT DN 200

**ISK2011**



WEARING INSERT DN 230

**ISK2012**



WEARING INSERT DN 180

**ISK2013**



CUTTING RING DN 165

**ISK2014**



CUTTING RING DN 180



**ISK2015**



SEAL KIDNEY DN180

**ISK2016**



SEAL KIDNEY DN150

**ISK2017**



SETTING DISC

**ISK2018**



TENSION NUT

**ISK2019**



TENSION NUT

**ISK2020**



HEXAGON HEAD BOLT DIN 931

**ISK2021**



SLEWING LEVER DN 210

**ISK2022**



LOCKING CAP DN 250



**ISK2023**



CUTTING RING DN 210

**ISK2024**



CUTTING RING DN 220

**ISK2025**



CUTTING RING DN 230

**ISK2026**



PRESSURE SPRING DN 165

**ISK2027**



PRESSURE SPRING DN 220

**ISK2028**



PRESSURE SPRING DN 230

**ISK2029**



COVER

**ISK2030**



SEALING COVER



**ISK2031**



BEARING BUSHING WITH GREASE GROOVE

**ISK2032**



BEARING BUSHING D 70/85X57

**ISK2033**



BEARING BUSHING D 95/108X70

**ISK2034**



SUPPORT BUSHING

**ISK2035**



HOUSING LING DN135 OUTLET SIDE

**ISK2036**



HOUSING LING DN180 OUTLET SIDE



**ISK2037**



REDUCTION PIECE DN250/220

**ISK2038**



TRANSITION PIECE WITH COLLAR DN230/210

**ISK2039**



COVER LINING

**ISK2040**



TRANSITION PIECE WITH COLLAR DN200/200

**ISK2041**



BUSHING

**ISK2042**



SUPPORT BUSHING



**ISK2043**



SEAL - RING DN 250

**ISK2044**



SEAL - RING DN 180

**ISK2045**



CLAMP PIECE LEFT

**ISK2046**



CLAMP PIECE RIGHT

**ISK2047**



COVER

**ISK2048**



BOLT 45 x 124

**ISK2049**



BUSHING

**ISK2050**



BUSHING





**ISK2051**



SLEWING CYLINDER

**ISK2052**



SLEWING CYLINDER

**ISK2053**



SLEWING PIVOT

**ISK2054**



BOLT

**ISK2055**



CYLINDER SUPPORT

**ISK2056**



SLEWING PIVOT



**ISK2057**



SUPPORT BUSHING

**ISK2058**



ARTICULATED BEARING

**ISK2059**



CYLINDER

**ISK2060**



PROTECTING TUBE

**ISK2061**



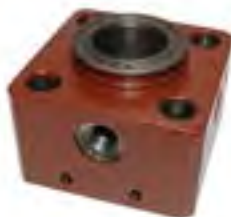
BOLT

**ISK2062**



CYLINDER HEAD

**ISK2063**



CYLINDER HEAD

**ISK2064**



TENSION RING



**ISK2065**



PISTON ROD

**ISK2066**



CONNECTION PIECE

**ISK2067**



CONNECTION (REINFORCED) SW60

**ISK2068**



CONNECTION PIECE

**ISK2069**



CLAMP

**ISK2070**



FLANGE COUPLING

**ISK2071**



FLANGE COUPLING



**ISK2072**



PUMPING CYLINDER DN200x2125

**ISK2073**



PUMPING CYLINDER PIPE DN 200 X 1600

**ISK2074**



PUMPING CYLINDER DN 230 X 2133

**ISK2075**



PUMPING CYLINDER DN 250 X 2500

**ISK2076**



PUMPING CYLINDER DN 180

**ISK2077**



PUMPING CYLINDER 230 X 2000

**ISK2078**



PUMPING CYLINDER DN 250 X 2500

**ISK2079**



SEAL SET FOR SLEWING CYLINDER



**ISK2080**



PISTON RAM DN 180

**ISK2081**



PISTON RAM DN 200

**ISK2082**



PISTON RAM DN 180

**ISK2083**



PISTON RAM DN 200

**ISK2084**



PISTON RAM DN 230

**ISK2085**



PISTON RAM DN 250



**ISK2086**



DIFFERENTIAL CYLINDER 1200-2023 125/80

**ISK2087**



DIFFERENTIAL CYLINDER 2023 130/80x2000

**ISK2088**



DIFFERENTIAL CYLINDER 2525 120/85x2500

**ISK2089**



DIFFERENTIAL CYLINDER 110/63

**ISK2090**



CYLINDER BLOCK

**ISK2091**



CYLINDER WELD 2023 120x2000

**ISK2092**



CYLINDER WELD 1200-2020-2023

**ISK2093**



CYLINDER WELD 2023 130x2000





**ISK2094**



CYLINDER WELD 2525 120x2500

**ISK2095**



PISTON ROD 80 X 1892/16-50

**ISK2096**



PISTON ROD 1200-2020-23 80

**ISK2097**



PISTON ROD 2525 85 x 2792

**ISK2098**



PISTON ROD 63 X 1810

**ISK2099**



PISTON ROD 75 X 2292/16-50

**ISK2100**



HYDRAULIC PISTON

**ISK2101**



HYDRAULIC PISTON 120/80



**ISK2102**



HYDRAULIC PISTON 125/80

**ISK2103**



HYDRAULIC PISTON 130/80

**ISK2104**



PISTON RING

**ISK2105**



PISTON RING 125\*4

**ISK2106**



GUIDE BUSHING

**ISK2107**



DISC 120/80, DISC 125/80, DISC 130/80

**ISK2108**



SCRAPER 63 X 73 X 7,  
SCRAPER 80 X 92 X 12, SCRAPER 85 X 97 X 12

**ISK2109**



SEALING GLAND SET 80/100 X 40,  
SEALING GLAND SET 70/85 X 22,5



**ISK2110**



GUIDE BUSHING 2023 120/80

**ISK2111**



GUIDE BUSHING 1200-2023

**ISK2112**



GUIDE BUSHING 2023 130/80

**ISK2113**



GUIDE BUSHING 2525 120/85

**ISK2114**



TENSION RING 1200-2023

**ISK2115**



TENSION RING

**ISK2116**



SEAL GLAND SET 85/105 X 40,  
SEALING GLAND SET 45/65 X 27.5

**ISK2117**



SEALING GLAND SET 63/83,  
SEALING GLAND SET 60/80 X 37



**ISK2118**



AGITATOR SHAFT 117 cm

**ISK2119**



AGITATOR SHAFT 119 cm

**ISK2120**



AGITATOR SHAFT 139 cm



ISK2121



HYDRAULIC MOTOR Ø31.75

ISK2122



SEALT SET

ISK2123



SHAFT FOR OEM HYDRAULIC MOTOR

ISK2124



WEDGE

ISK2125



THREADED BOLT

ISK2126



WEDGE

ISK2127



HOLDING BOLT



**ISK2128**



AGITATOR BEARING

**ISK2129**



SUPPORT

**ISK2130**



FLANGE SHAFT

**ISK2131**



COVER

**ISK2132**



DISC

**ISK2133**



DISC

**ISK2134**



FLANGE BEARING

**ISK2135**



SEALING



**ISK2136**



AGITATOR BEARING

**ISK2137**



SUPPORT

**ISK2138**



FLANGE SHAFT

**ISK2139**



BUSHING

**ISK2140**



SUPPORT NEW

**ISK2141**



FLANGE SHAFT NEW

**ISK2142**



SUPPORT

**ISK2143**



FLANGE BUSHING





**ISK2144**



DISC D 60/95 X 5

**ISK2145**



FLANGED BEARING CLOSED

**ISK2146**



FLANGED BEARING OPEN

**ISK2147**



SEALING CONE

**ISK2148**



FLANGED SHAFT (BEARING SIDE)

**ISK2149**



FLANGED SHAFT (GEAR SIDE)

**ISK2150**



BUSHING D 56/D 45 X 45

**ISK2151**



PISTON BUSHING



**ISK2152**



FLAT GATE VALVE 180/55/25

**ISK2153**



FLAT GATE VALVE DN 210

**ISK2154**



SHEEL 180/55/25

**ISK2155**



SHEEL 210

**ISK2156**



PLUNGER HOUSING

**ISK2157**



PLUNGER HOUSING

**ISK2158**



GUIDE SLEEVE

**ISK2159**



CASTELLATED FLANGE



**ISK2160**



BUSHING

**ISK2161**



BUSHING

**ISK2162**



SAFETY RING DIN 471 35 X 1,5

**ISK2163**



PISTON BOLT

**ISK2164**



BEARING BUSHING

**ISK2165**



SEALING RING

**ISK2166**



SPACING RING

**ISK2167**



PISTON DISC



**ISK2168**



COUPLING

**ISK2169**



FORM LACE RING 50 X 16

**ISK2170**



O-RING 65 X 3, O-RING 70 X 5

**ISK2171**



PISTON CONNECTION

**ISK2172**



PISTON CONNECTION

**ISK2173**



PIVOT

**ISK2174**



EXTENSION 200 MM

**ISK2175**



THREADED PIN M 75 X 2



**ISK2176**



CLUTCH

**ISK2177**



TOOTHED WHEEL ROTEX 28/38

**ISK2178**



CLUTCH

**ISK2179**



CLUTCH

**ISK2180**



HOLLOW SHAFT

**ISK2181**



GEARSHIFT FORK WITH ROD

**ISK2182**



GEAR Z58

**ISK2183**



GEAR Z52



**ISK2184**



GEAR Z46

**ISK2185**



SHAFT - INPUT, 4190 403 / 419 2 102

**ISK2186**



PINION GEAR 30Z

**ISK2187**



PINION GEAR

**ISK2188**



GEAR 27 TEETH

**ISK2189**



GEAR 36 TEETH

**ISK2190**



HOLLOW SHAFT

**ISK2191**



DRIVE FLANGE



**ISK2192**



COUPLING 17.5X50X48

**ISK2193**



COUPLING 22,5X50X48

**ISK2194**



COUPLING 31,5X50X50

**ISK2195**



COUPLING 36x50x50

**ISK2196**



DRIVE PINION 18 TEETH

**ISK2197**



DRIVE TOOTHED WHEEL 73 TEETH

**ISK2198**



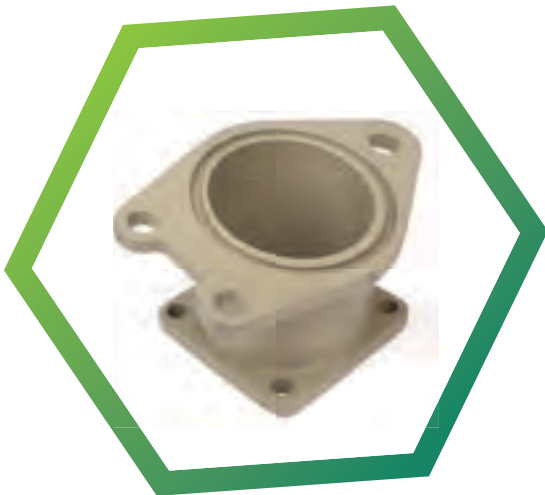
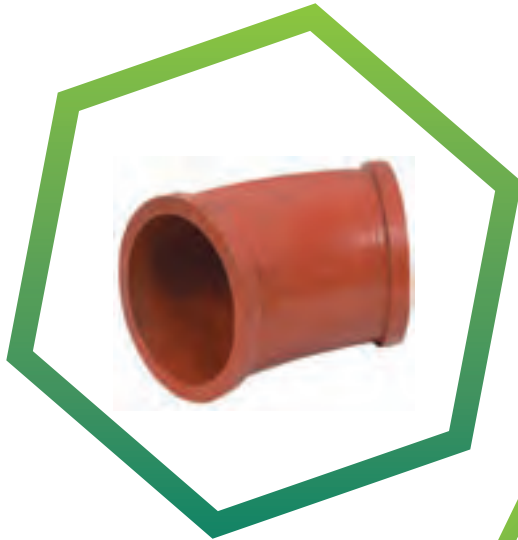
ALUMINIUM COUPLING DN 125 5.5"

**ISK2199**



HOUSING OPPOSITE SIDE, HOUSING DRIVE SIDE







**ISK2200**



REDUCTION ELBOW

**ISK2201**



2. OUTLET ELBOW DN180

**ISK2202**



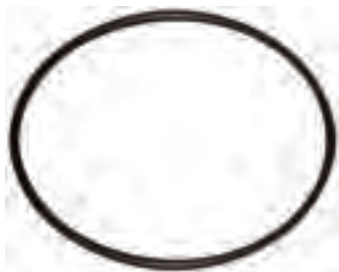
14 DEGREE ELBOW

**ISK2203**



SEAL FOR 6" ELBOW

**ISK2204**



O RING FOR 14 DEGREE ELBOW

**ISK2205**



CUP TYPE COUPLING DN 180



**ISK2206**



ELBOW DN 150 DEGREES M/F JOINT

**ISK2207**



TAPERED BEND DN 180/150 90 DEGREES

**ISK2208**



CUP-TENSION CLAMP DN 150 WITH WEDGE-TYPE LOCK

**ISK2209**



CLAMP 5 1/2" WITH SUPPORT

**ISK2210**



SCREW TYPE COUPLING 5,5"

**ISK2211**



HINGE



**ISK2212**



ELBOW 5,5" 90 DEGREE

**ISK2213**



LAMINATED ELBOW 5,5" 90 DEGREE

**ISK2214**



ELBOW 5,5" 45 DEGREE

**ISK2215**



ELBOW 5,5" 30 DEGREE

**ISK2216**



ELBOW 5,5" 15 DEGREE

**ISK2217**



ELBOW 5,5" 10 DEGREE

**ISK2218**



U CLAMP

**ISK2219**



TUBE SUPPORT



**ISK2220**



ELBOW 5,5" 32,5 DEGREE

**ISK2221**



ELBOW 6" 32,5 DEGREE

**ISK2222**



ELBOW 6" 40 DEGREE

**ISK2223**



ELBOW 6" 45 DEGREE

**ISK2224**



ELBOW 6" 50 DEGREE

**ISK2225**



ELBOW 100 mm EXTENSION

**ISK2226**



TIGHTENING STRAP

**ISK2227**



ELBOW 340 mm EXTENSION



**ISK2228**



REDUCER 3000 mm

**ISK2229**



REDUCER 2500 mm

**ISK2230**



REDUCER 1600 mm

**ISK2231**



REDUCER 1240 mm

**ISK2232**



REDUCER 1550 mm DN150/125

**ISK2233**



REDUCER 1500 mm DN180/150

**ISK2234**



REDUCER 1500 mm DN150/125

**ISK2235**



REDUCER 1460 mm DN150/125



**ISK2236**



SEAL:2,5", 3", 3,5", 4", 4,5", 5", 5,5", 6", 8", 10"

**ISK2237**



FLANGE 5,5"

**ISK2238**



V LIP SEAL 4,5", 5,5"

**ISK2239**



FLANGE 5,5"

**ISK2240**



LIP SEAL 5,5"

**ISK2241**



FLANGE 5,5"

**ISK2242**



CLEANING BALL

**ISK2243**



CLAMP TYPE COUPLING 5.5"





### ISK2244

5,5" 3 mt END HOSE DOUBLE FLANGE

### ISK2245

5,5" 4 mt END HOSE DOUBLE FLANGE

### ISK2246

5,5" 5 mt END HOSE DOUBLE FLANGE



### ISK2247

5,5" 3 mt END HOSE SINGLE FLANGE

### ISK2248

5,5" 4 mt END HOSE SINGLE FLANGE

### ISK2249

5,5" 5 mt END HOSE SINGLE FLANGE



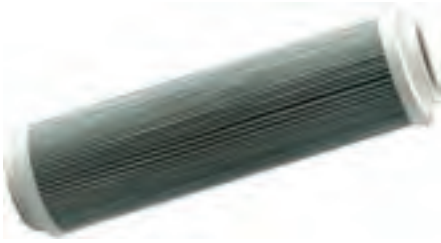
### ISK2250



5,5" DELIVERY PIPE / The pipes can be manufactured at various lengths and diameters.



**ISK2251**



FILTER

**ISK2252**



FILTER

**ISK2253**



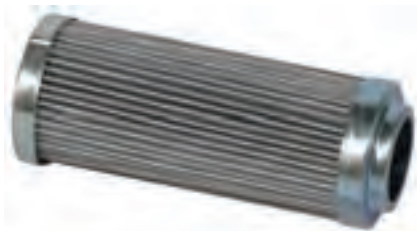
FILTER

**ISK2254**



FILTER

**ISK2255**



FILTER

**ISK2256**



FILTER

**ISK2257**



FILTER

**ISK2258**



FILTER



**ISK2259**



WATER PUMP

**ISK2260**



REPAIR KIT PLASTIC FOR 7560 WATER PUMP

**ISK2261**



CLUTCH

**ISK2262**



SUPPORT PLATE 60 x 60 x 6

**ISK2263**



SHUTT OF VALVE MANUAL

**ISK2264**



DISTRIBUTOR GEAR BOX

**ISK2265**



CAULDRON RUBBER BAND 350 x 10 x 3000 mm



**ISK2266**



HYDRAULIC PUMP 130 cm<sup>3</sup>

**ISK2267**



HYDRAULIC PUMP 60 cm<sup>3</sup>

**ISK2268**



HYDRAULIC PUMP

**ISK2269**



HYDRAULIC PUMP A7VO107

**ISK2270**



HYDRAULIC PUMP A2FO16

**ISK2271**



HYDRAULIC PUMP A2FO23

**ISK2272**



CONNECTION CABLE

**ISK2273**



MAGNETIC COIL



**ISK2274**



REMOTE CONTROL

**ISK2275**



CARRYING STRAP

**ISK2276**



JOY STICK

**ISK2277**



BATTERY

**ISK2278**



BATTERY 9.6V

**ISK2279**



EMERGENCY PUSH BUTTON

**ISK2280**



FLIP SWITCH



# Spare Parts For Concrete Pumps & Truck Mixers



# CIFA

THE ORIGINAL MANUFACTURER'S NAMES, MANUFACTURER LOGOS, PART NAMES AND PART DESCRIPTIONS ARE USED FOR REFERENCE PURPOSES ONLY. IT IS NOT IMPLIED, THAT ANY PARTS IN THIS CATALOGUE ARE THAT OF THE ORIGINAL MANUFACTURERS.



**ISK3001**



S VALVE 2018N Ø80

**ISK3002**



S VALVE 2018N Ø90

**ISK3003**



SUPPORT BUSHING

**ISK3004**



SUPPORT

**ISK3005**



BUSHING

**ISK3006**

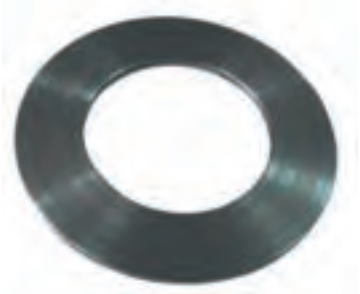


WEAR BUSH





**ISK3007**



SPACER

**ISK3008**



FLANGE

**ISK3009**



COVER

**ISK3010**



BEARING

**ISK3011**



NUT RING

**ISK3012**



COVER

**ISK3013**



SPACER

**ISK3014**



COVER



**ISK3015**



GASKET

**ISK3016**



COMPENSATING RING

**ISK3017**



COLLAR

**ISK3018**



WEAR RING

**ISK3019**



WEAR RING

**ISK3020**



WEAR RING SURFACE HARD WELDED

**ISK3021**



WEAR PLATE S8

**ISK3022**



WEAR PLATE S8 SURFACE HARD WELDED



**ISK3023**



LEVER

**ISK3024**



BUSHING

**ISK3025**



SHOCK ARSORBER

**ISK3026**



PIN

**ISK3027**



PIN

**ISK3028**



SUPPORT

**ISK3029**



SPACER

**ISK3030**



SEEGER RING



**ISK3031**



SEEGER RING

**ISK3032**



SEAL SUPPORTING

**ISK3033**



GASKET

**ISK3034**



RING

**ISK3035**



GASKET

**ISK3036**



CONNECTION

**ISK3037**



GASKET

**ISK3038**



SEAL SUPPORTING



**ISK3039**



WEAR PLATE DN 230 -S9

**ISK3040**



WEARING DN 230

**ISK3041**



SHAFT

**ISK3042**



SHAFT

**ISK3043**



REDUCER SUPPORT

**ISK3044**



COVER

**ISK3045**



FLANGE

**ISK3046**



CYLINDER HEAD



**ISK3047**



WEAR RING

**ISK3048**



GASKET

**ISK3049**



MIXER SHAFT

**ISK3050**



MIXER PADDLE

**ISK3051**



ROTATION CYLINDER

**ISK3052**



PISTON ROD

**ISK3053**



CONCRETE CYLINDER Ø230 x 2200





**ISK3054**



SEAL SET

**ISK3055**



KIT OF GASKETS

**ISK3056**



WATER PUMP

**ISK3057**



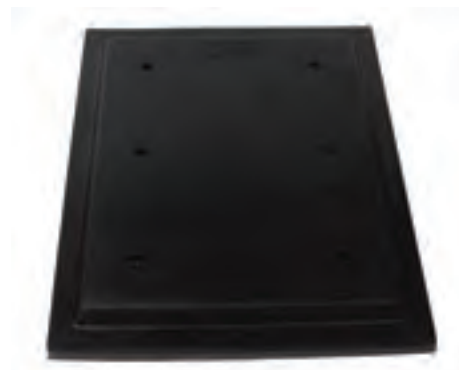
REPAIR KIT FOR WATER PUMP

**ISK3058**



SHUTTER S8

**ISK3059**



GASKET FOR SHUTTER S8





**ISK3060**



ROTATION CYLINDER Q80X55X218

**ISK3061**



TUBE FOR ROTATION CYLINDER Q80X95X270

**ISK3062**



PISTON ROD Q55X430

**ISK3063**



REAR PLUG

**ISK3064**



BREAKING WASHER Q80X30X20

**ISK3065**



GUIDE BUSH

**ISK3066**



CYLINDER HEAD

**ISK3067**



TIE ROD



**ISK3068**



WASHER Q80X137X136

**ISK3069**



COVER Q80X180X32

**ISK3070**



FLANGE 218XM140X2X40

**ISK3071**



SEAL SET

**ISK3072**



HYDRAULIC CYLINDER Q120X80X2000

**ISK3073**



CASTING BARREL WITH CASTING  
GUIDE BUSH Q120X145X2117

**ISK3074**



ROD 80X2395

**ISK3075**



PISTON Q120XM50X1,5X68



**ISK3076**



REAR PLUG Q175X110

**ISK3077**



BREAKING WASHER Q115X32X50

**ISK3078**



HEAD Q125X70X105

**ISK3079**



COVER Q140X70X51

**ISK3080**



FLANGE Q180XM135X2X40

**ISK3081**



SEAL SET

**ISK3082**



HYDRAULIC CYLINDER Q115X70X1500

**ISK3083**



CYLINDER BARREL Q115X140X1610



**ISK3084**



ROD Q70X1880

**ISK3085**



PISTON Q115XM45X1,5X65

**ISK3086**



BOTTOM Q175X110

**ISK3087**



BREAKING WASHER Q115X32X50

**ISK3088**



GUIDE BUSH

**ISK3089**



HEAD Q125X70X106

**ISK3090**



COVER Q140X70X56

**ISK3091**



SEAL SET



**ISK3092**



REDUCTION ELBOW 7" - 6"

**ISK3093**



ELBOW 90 DEGREE R=190

**ISK3094**



2ND ELBOW 6" S3000

**ISK3095**



ELBOW 90 DEGREE DN125

**ISK3096**



ELBOW 6"

**ISK3097**



ELBOW 60 DEGREE

**ISK3098**



ELBOW 30 DEGREE

**ISK3099**



ELBOW 30 DEGREE DN125



**ISK3100**



1. OUTLET ELBOW DN180 90 DEGREE NEW MODEL

**ISK3101**



2. OUTLET ELBOW DN150 90 DEGREE

**ISK3102**



1. OUTLET ELBOW COUPLING

**ISK3103**



REDUCER PIPE S3000

**ISK3104**



CLAMP

**ISK3105**



HYDRAULIC CYLINDER

**ISK3106**



GEARED MOTOR

**ISK3107**



GEARED MOTOR COUPLING



**ISK3108**



BATTERY

**ISK3109**



BATTERY

**ISK3110**



CONTROL PANEL



# Spare Parts For Concrete Pumps & Truck Mixers



# SERMAC

THE ORIGINAL MANUFACTURER'S NAMES, MANUFACTURER LOGOS, PART NAMES AND PART DESCRIPTIONS ARE USED FOR REFERENCE PURPOSES ONLY. IT IS NOT IMPLIED, THAT ANY PARTS IN THIS CATALOGUE ARE THAT OF THE ORIGINAL MANUFACTURERS.



**ISK4001**



S VALVE

**ISK4002**



WEAR PLATE WELDED TYPE

**ISK4003**



WEAR PLATE CASTING

**ISK4004**



WEAR RING CASTING

**ISK4005**



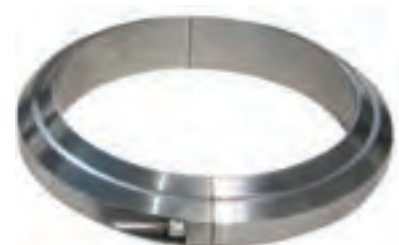
WEAR RING HARD FACE

**ISK4006**



RING

**ISK4007**



SEAL RING



**ISK4008**



RING NUT

**ISK4009**



GASKET

**ISK4010**



RING

**ISK4011**



RING

**ISK4012**



GASKET

**ISK4013**



SPOT

**ISK4014**



COVER

**ISK4015**



BUSHING



**ISK4016**



WEAR PLATE CASTING

**ISK4017**



PIN

**ISK4018**



CYLINDER

**ISK4019**



JOINT HEAD

**ISK4020**



PISTON 123,7\*M55\*2\*89

**ISK4021**



GUIDE BUSHING

**ISK4022**



GUIDE BUSH 127\*82\*126

**ISK4023**



PIN



**ISK4024**



FLANGED SLEEVE

**ISK4025**



RING

**ISK4026**



BUSHING

**ISK4027**



COVER

**ISK4028**



COUPLING

**ISK4029**



GASKET

**ISK4030**



BRONZE BUSHING

**ISK4031**



COUPLING



**ISK4032**



RING

**ISK4033**



RING

**ISK4034**



RING

**ISK4035**



GASKET

**ISK4036**



UNION

**ISK4037**



UNION

**ISK4038**



RING

**ISK4039**



UNION INSIDE HARD WELDED



## ISK4040



PISTON RAM 180

## ISK4041



PISTON RAM 200

## ISK4042



PISTON RAM 230





**ISK4043**



PISTON HEAD 125 mm

**ISK4044**



BUSHING

**ISK4045**



MAIN HYDRAULIC CYLINDER

**ISK4046**



CONNECTOR

**ISK4047**



MIXING SHAFT

**ISK4048**



DRIVE PIN

**ISK4049**



MIXING PADDLE

**ISK4050**



DRIVE PIN



**ISK4051**



SLIDING CLUCH HOUSING

**ISK4052**



HOLLOW SHAFT

**ISK4053**



GEAR Z53

**ISK4054**



GEAR Z31

**ISK4055**



GEAR Z10

**ISK4056**



GEAR Z10



**ISK4057**



FIRST ELBOW

**ISK4058**



SECOND ELBOW

**ISK4059**



REDUCED PIPE

**ISK4060**



LEVER COUPLING

**ISK4061**



35 DEGREE ELBOW

Spare Parts For Concrete Pumps & Truck Mixers



# TRUCK MIXER

THE ORIGINAL MANUFACTURER'S NAMES, MANUFACTURER LOGOS, PART NAMES AND PART DESCRIPTIONS ARE USED FOR REFERENCE PURPOSES ONLY. IT IS NOT IMPLIED, THAT ANY PARTS IN THIS CATALOGUE ARE THAT OF THE ORIGINAL MANUFACTURERS.



# CONCRETE MIXER

Spare Parts For Concrete Pumps & Truck Mixers

**ISK5001**



WATER PUMP GEAR TYPE NSTIII

**ISK5002**



WATER PUMP SHAFT TYPE

**ISK5003**



WATER PUMP LT TYPE

**ISK5004**



COMPLETE SET

**ISK5005**



IMPELLER SHAFT

**ISK5006**



IMPELLER SHAFT

# CONCRETE MIXER

Spare Parts For Concrete Pumps & Truck Mixers



**ISK5007**



GEAR

**ISK5008**



BEARING

**ISK5009**



PLASTIC COUPLING

**ISK5010**



SEAL SET

**ISK5011**



IMPELLER

**ISK5012**



S HOSE

**ISK5013**



FITTINGS COMPLETE

**ISK5014**



FITTINGS



# CONCRETE MIXER

Spare Parts For Concrete Pumps & Truck Mixers

**ISK5015**



FILLING CHUTE

**ISK5016**



DISCHARGE CHUTE

**ISK5017**



V CHUTE

**ISK5018**



SEAL FOR V CHUTE

**ISK5019**



CHUTE SHORT

**ISK5020**



EXTENSION CHUTE



# CONCRETE MIXER

Spare Parts For Concrete Pumps & Truck Mixers



**ISK5021**



COUPLING 23 TEETH

**ISK5022**



COUPLING 21 TEETH

**ISK5023**



CHUTE HOLDER

**ISK5024**



CHUTE LOCK

**ISK5025**



FLAT PLASTIC CHUTE

**ISK5026**



FLAT PLASTIC CHUTE SHORT

**ISK5027**



PLASTIC EXTENSION CHUTE

**ISK5028**



PLASTIC EXTENSION CHUTE SHORT



# CONCRETE MIXER

Spare Parts For Concrete Pumps & Truck Mixers

**ISK5029**



HYDRAULIC SET

**ISK5030**



LIEBHERR TYPE CHUTE SUPPORT MANUAL

**ISK5031**



HYDRAULIC CYLINDER

**ISK5032**



ALUMINIUM TANK

**ISK5033**



HAND PUMP

# CONCRETE MIXER

Spare Parts For Concrete Pumps & Truck Mixers



**ISK5034**



PNEUMATIC SYSTEM

**ISK5035**



MIXER FELT 110X160X13/49

**ISK5036**



MIXER FELT 113X150X12/50

**ISK5037**



MIXER FELT 125X180X13/49

**ISK5038**



MIXER FELT 145X215X14/65

**ISK5039**



CMP 2513

**ISK5040**



BEARING



# CONCRETE MIXER

Spare Parts For Concrete Pumps & Truck Mixers

**ISK5041**



CABLE 5 MT  
CABLE 5,5 MT  
CABLE 6 MT  
CABLE 6,5 MT  
CABLE 7 MT  
CABLE 7,2 MT  
CABLE 7,5 MT  
CABLE 7,7 MT

BUSH SET DN 110

**ISK5042**



CABLE 8 MT  
CABLE 8,5 MT  
CABLE 9 MT  
CABLE 10 MT  
CABLE 12 MT

ROLLER 280 x 160 x 110 EXTERNAL

**ISK5043**



CABLE LIEBHEER 7.3 MT  
CABLE 7.5MT (gas cable)  
CABLE 5.6MT (liebheer type)  
CABLE 5.4MT (cifa type)  
CABLE 7.1 MT Operation cable  
CABLE 6 MT- (liebheer)  
CABLE LIEBHEER 7.3 MT  
CABLE LIEBHEER 7.8 MT  
CABLE LIEBHEER 9.2 MT

ROLLER 200 x 110 x 105 COMPLETE DIA 35mm

**ISK5044**



CONTROL BOX DOUBLE

**ISK5045**



CONTROL BOX SINGLE

# CONCRETE MIXER

Spare Parts For Concrete Pumps & Truck Mixers



**ISK5046**



WATER METER 1000 LT

**ISK5047**



BALLANCA BALL

**ISK5048**



PROPELLER SHAFT 6 HOLES DIA.100MM

**ISK5049**



PROPELLER SHAFT 6 HOLES DIA.100MM

**ISK5050**



BOLTED LADDER GUARD

**ISK5051**



MIXER START-STP SWICTH

**ISK5052**



THERMO SWICTH 3 STEPS

**ISK5053**



THERMO SWICTH 4 STEPS



# CONCRETE MIXER

Spare Parts For Concrete Pumps & Truck Mixers

**ISK5054**



M.20X18 cm	M.20X27 cm
M.20X20 cm	M.20X29 cm
M.20X22 cm	M.20X31 cm
M.20X24 cm	M.20X20 cm
M.20X26 cm	M.20X22 cm
M.20X28 cm	M.20X24 cm
M.20X23 cm	M.20X26 cm
M.20X25 cm	

**ISK5056**



THRUST PIECE

**ISK5057**



BRACKET

**ISK5058**



THRUST PIECE

**ISK5059**



THRUST PIECE

**ISK5060**



EXTENSION CHUTE STEP

**ISK5061**



SEAL FOR MANHOLE COVER



# CONCRETE MIXER

Spare Parts For Concrete Pumps & Truck Mixers



**ISK5062**



OIL COLLER

**ISK5063**



FILTER

**ISK5064**



FILTER COMPLETE

**ISK5065**



FAN 10"

**ISK5066**



FAN 11"

**ISK5067**



FAN 12"





# CONCRETE MIXER

Spare Parts For Concrete Pumps & Truck Mixers

**ISK5068**



COMPLETE ROLLER 280X160X90

**ISK5069**



EMPTY ROLLER 280X160X90

**ISK5070**



COMPLETE ROLLER 280X160X110

**ISK5071**



EMPTY ROLLER 280X160X110

**ISK5072**



COMPLETE ROLLER 280X160X90

**ISK5073**



EMPTY ROLLER 250X160X90

**ISK5074**



COMPLETE ROLLER 250X160X110

**ISK5075**



EMPTY ROLLER 250X160X110

# CONCRETE MIXER

Spare Parts For Concrete Pumps & Truck Mixers



**ISK5076**



COMPLETE ROLLER 200X160X110

**ISK5077**



EMPTY ROLLER 200X160X110

**ISK5078**



COMPLETE ROLLER 250X130X90

**ISK5079**



ROLLER 250X130X90

**ISK5080**



COMPLETE ROLLER 250X130X110

**ISK5081**



EMPTY ROLLER 250X130X110

**ISK5082**



**ISK5083**



COMPLETE ROLLER 248X130X120



# CONCRETE MIXER

Spare Parts For Concrete Pumps & Truck Mixers

**ISK5084**



EMPTY ROLLER 280X110X90

**ISK5085**



COMPLETE ROLLER 280X110X90

**ISK5086**



EMPTY ROLLER 250X110X90

**ISK5087**



COMPLETE ROLLER 250X110X90

**ISK5088**



EMPTY ROLLER 260/110X90

**ISK5089**



COMPLETE ROLLER 260/110X90

**ISK5090**



EMPTY ROLLER 250X130X120

**ISK5091**



COMPLETE ROLLER 250/130X120

# CONCRETE MIXER

Spare Parts For Concrete Pumps & Truck Mixers



**ISK5092**



EMPTY ROLLER 250X130X120

**ISK5093**



COMPLETE ROLLER 250X130X120

**ISK5094**



EMPTY ROLLER 220X110X90

**ISK5095**



COMPLETE ROLLER 220X110X90

**ISK5096**



EMPTY ROLLER 200X110X110

**ISK5097**



COMPLETE ROLLER 220X110X110

**ISK5098**



EMPTY ROLLER 200X110X104

**ISK5099**



COMPLETE ROLLER 200X110X104



# CONCRETE MIXER

Spare Parts For Concrete Pumps & Truck Mixers

**ISK5100**



BEARING 32310

**ISK5101**



BEARING 30312

**ISK5102**



BEARING 32312

**ISK5103**



BEARING 30315

**ISK5104**



PIN 25 MM

**ISK5105**



PIN 35 MM

**ISK5106**



PIN 40 MM

**ISK5107**



PLASTIC ROLLER COVER

# CONCRETE MIXER

Spare Parts For Concrete Pumps & Truck Mixers



**ISK5108**



COVER 110 MM

**ISK5109**



COVER 130 MM

**ISK5110**



COVER 160 MM

**ISK5111**



COUPLING

**ISK5112**



COVER 160 MM

**ISK5113**



ECO LID SEAL

**ISK5114**



BELLOWS

**ISK5115**



COUPLING





# CONCRETE MIXER

Spare Parts For Concrete Pumps & Truck Mixers

**ISK5116**



GEAR BOX 8M<sup>3</sup>

**ISK5117**



SVP23 HYDRAULIC PUMP

**ISK5118**



HBR TYPE GEAR BOX

**ISK5119**



ELECTRIC MOTOR

**ISK5120**



REDUCTOR

**ISK5121**



SCREW CONVEYOR



# CONCRETE MIXER

Spare Parts For Concrete Pumps & Truck Mixers



ISK5122



12.7 m<sup>3</sup> DRUM

ISK5123



PLASTIC MUDGUARD

ISK5124



PLASTIC COUPLING

ISK5125



DUMP TRUCK SPRING LEAF





## HEAD OFFICE

-  20 Winchester Str, Basingstoke, UK, RG21 7DZ.  
Company Reg. No: 11987030. VAT No: 338542194
-  +44 1223 969844
-  +90 312 258 65 38
-  +90 312 258 65 38
-  [info@yudinequipment.com](mailto:info@yudinequipment.com)
-  [sales@ydspares.com](mailto:sales@ydspares.com)
-  [www.yudinequipment.com](http://www.yudinequipment.com)

# Spare Parts For Concrete Pumps & Truck Mixers

A large, industrial concrete pump arm, consisting of a long horizontal pipe with a vertical section at the end, extending from the left side of the page towards the right.

## TURKEY BRANCH

-  Kizilirmak Mah, 1445 Sok No:2, PARAGON TOWER, Block B, Floor 23,  
Office 113, Cankaya / Ankara - Türkiye
  -  +44 1223 969844
  -  +90 312 258 65 38
  -  +90 312 258 65 38
  -  [info@yudinequipment.com](mailto:info@yudinequipment.com)
  -  [sales@ydspares.com](mailto:sales@ydspares.com)
  -  [www.yudinequipment.com](http://www.yudinequipment.com)
- 
- A smaller, vertical concrete pump arm, consisting of a vertical pipe with a horizontal section at the top, located in the bottom right corner of the page.